

TOBIT ROCHE

D R E A M S C A P E S

TOBIT ROCHE

DREAMSCAPES

17th September - 19th October 2019

Monday - Friday 11am - 6pm

Saturday 11am - 3pm

Indar Pasricha Fine Arts
44 Moreton Street, Pimlico, London SW1V 2PB

Tel: 020 7724 9541 • Fax: 020 7258 0493

www.ipfa.co.uk

Email: info@ipfa.co.uk

Gallery Statement

India has always been a place, a state of mind where people go to seek the unknown, the other. Tobit Roche, who partly grew up in India, goes back time and again as India has captivated his soul and this shows in his wonderful abstract images with which he explains his visions of that country and perhaps more significantly his awareness of himself.



Nanda Devi (oil sketch 2009)
24cm x 18cm

Foreword

After an itinerant childhood between Britain, Canada, Hong Kong and India, Tobit Roche spent some time in the 1970s in England, working with the artist Duncan Grant at Charleston on the edge of the South Downs. His father Paul Roche, who lived with Grant, was a poet and translator from the classics, a character who can be seen in the background of Twentieth Century literature, flitting through the Plath-Hughes story and several Bloomsbury biographies. Although Grant and Paul Roche provided a retrospective link to major creative artists and writers of the previous generation, and arguably to post-impressionism and Matisse, Tobit's work seems unbounded by the social constraints of the Bloomsbury group. It feels more global. Even his pictures of England are not very English. India, where Tobit passed his teenage years, appears to have left a psychic impress upon his art.

His work often depicts the landscape and the sky, and the refractions of light. He engages with the weather, and even with the effects of pollution on the atmosphere. In his paintings, Tobit builds up towards the sky from the ground: spindly trunks of trees, then the flecked green of the canopy, a layer of golden haze that makes the landscape a little blurred and noticeably Indian, next the clouds rising across the sky, and finally the whites and blues of the atmosphere. The result, particularly in his abstract work, is sometimes reminiscent of Mark Rothko.

Tobit Roche's paintings contain a sense of mystery and of calm, as if he might have enclosed a secret between the paint and the canvas. In India, you cannot fail to be surrounded by people, whether you are walking in the street or painting en plein air in the Himalayan foothills, but in Tobit's Indian (or Asian) pictures, the people are hidden, although not wholly absent. Rather than displaying human figures, he inflects emotions in topography: for instance, a hill that seems like a curled animal, or the uplift of a peak to a possibly magical point, or a landscape peopled in its way with trees and peaks. Even his paintings of mountains are never cold. Blue and purple bluebell hues take the eye of the seer from the hills to whitish peaks, and a spiritual, Roerichian transcendence. He is a remarkable and unusual artist.

With his Bloomsbury backstory, Tobit Roche's work contains an element of romantic effortlessness. His paintings come naturally to him – and to us, their admirers.

Patrick French, Delhi 2019

Abstracts & Lingams



Indian Yellow
140cm x 140cm



Red Lingam
160cm x 122cm



Mango Time
180cm x 140cm



Dark Lingam (work in progress)
170 x130 cm



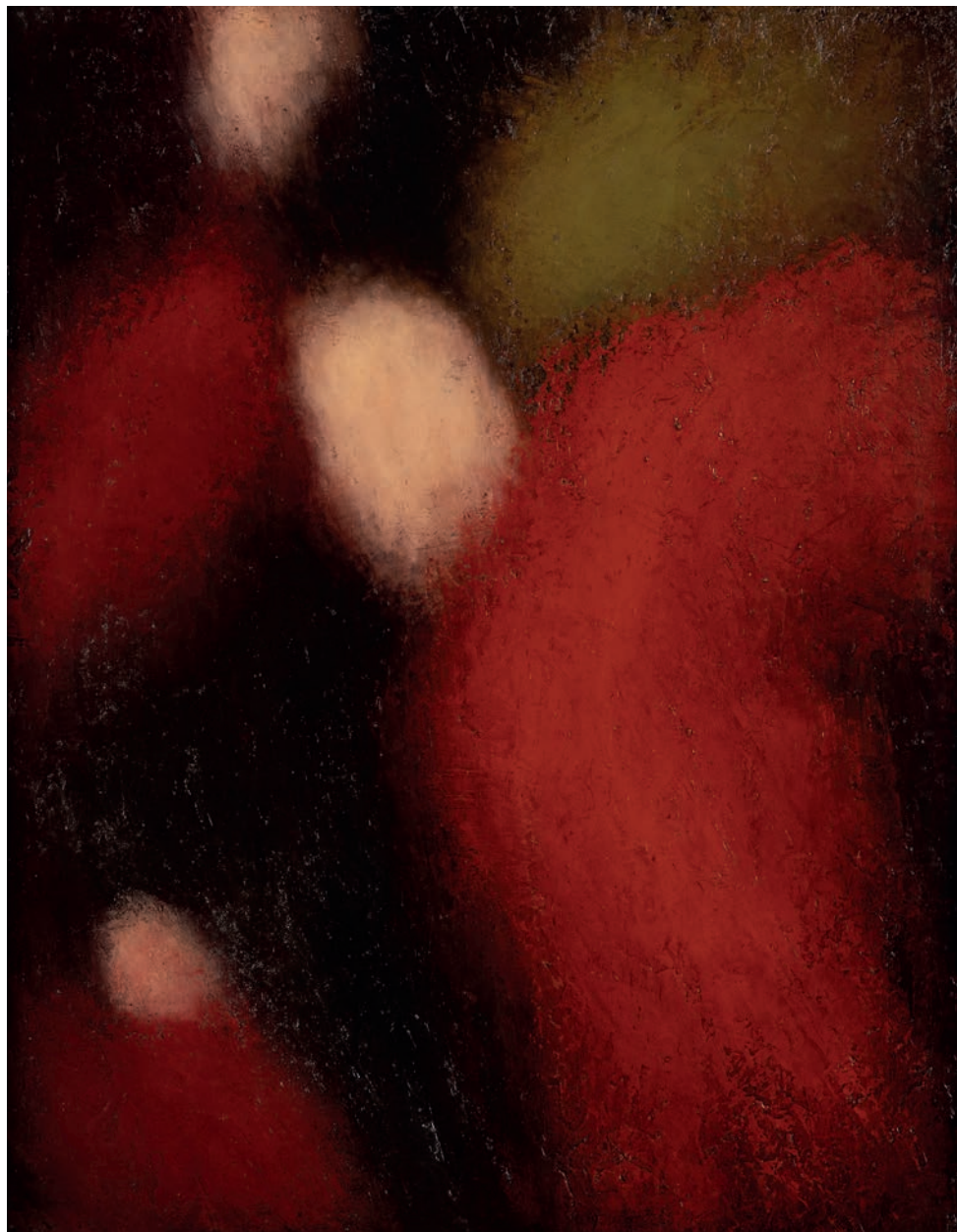
Untitled
120cm x 120cm



White Lingam
41cm 31cm



Violet Lingam
35 xm x 23cm



Abstract Untitled
72 x 56cm

Landscapes & Mountains



Pink Sky Mountains
150cm x 120cm (portrait)



Mount Trisul
46 x 61cm



Mountains Untitled
187 x122cm



Fires of April
39 x 31cm



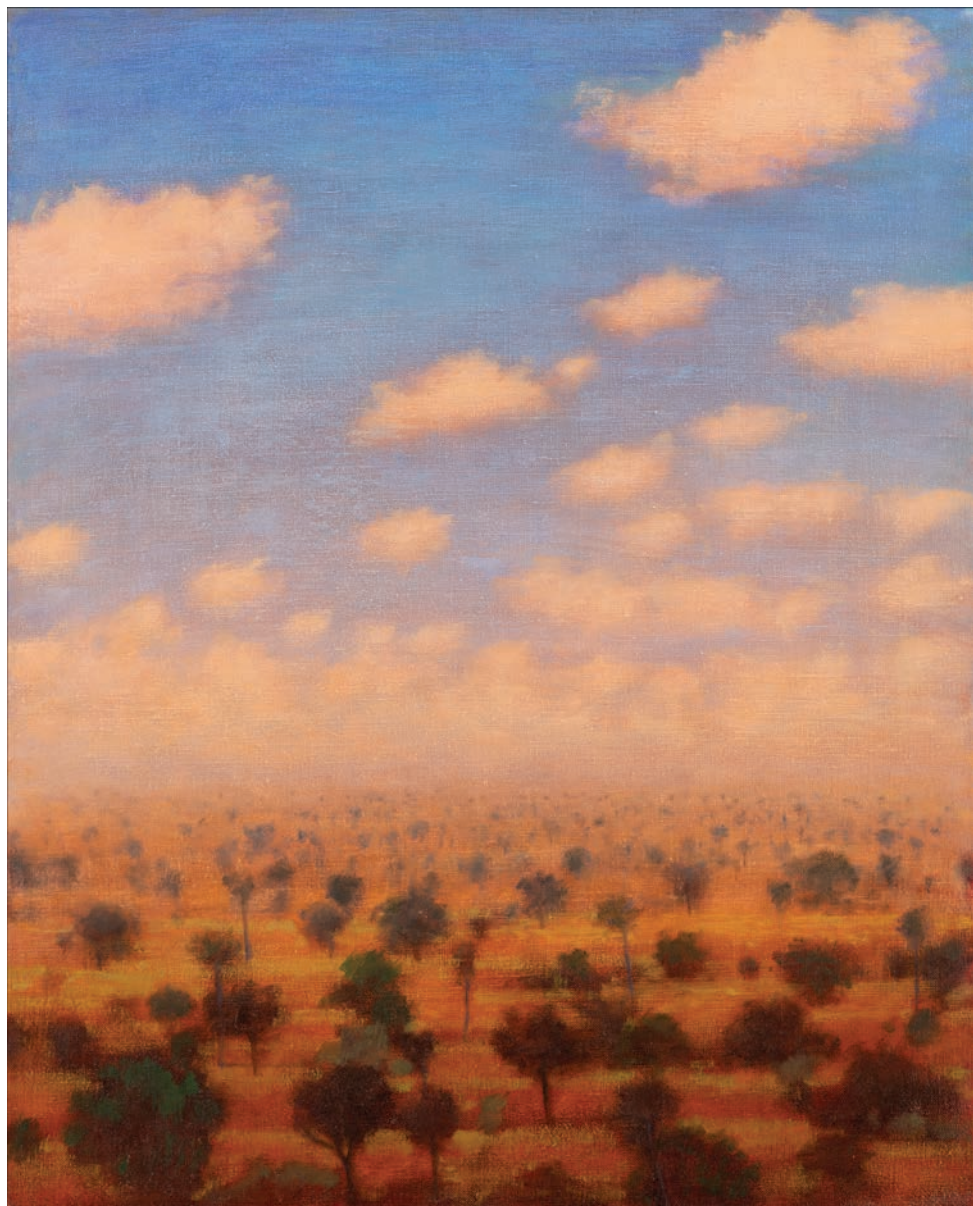
Garhwal Himalaya
92 x81cm



Mountains Untitled 2,
82 x 82cm



Mountains 15 (orange sky)
90 x 80cm



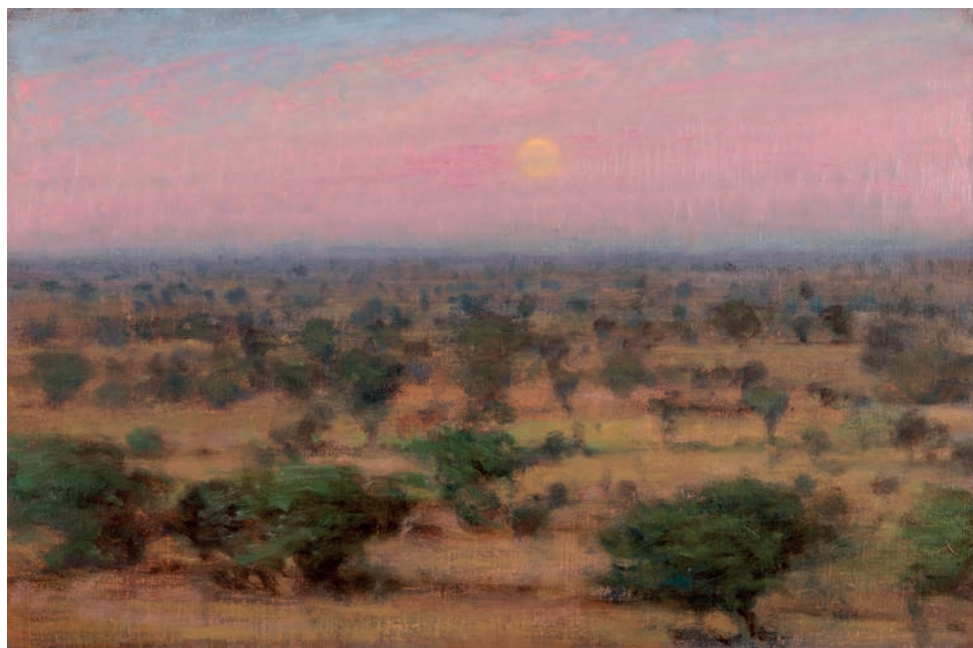
Rajasthan Landscape with Clouds
45 x 35cm



Mustard Fields
140 x 200cm



Scene from a Train with Sunrise 2,
33 x 56cm



Scene from a Train with Sunrise 1,
31x 47cm



Scene from a Train with Sunrise 3.
42 x 56cm



Taj 1.
31 x 42cm



Nanda Devi 1
42 x 62cm



Maheshwar Sunrise
21x 31cm

Indar Pasricha Fine Arts
44 Moreton Street
Pimlico
London SW1V 2PB

Telephone: +44(0)207 724 9541
Mobile: +44 (0)770 334 1942

www.ipfa.co.uk